

1 Problem

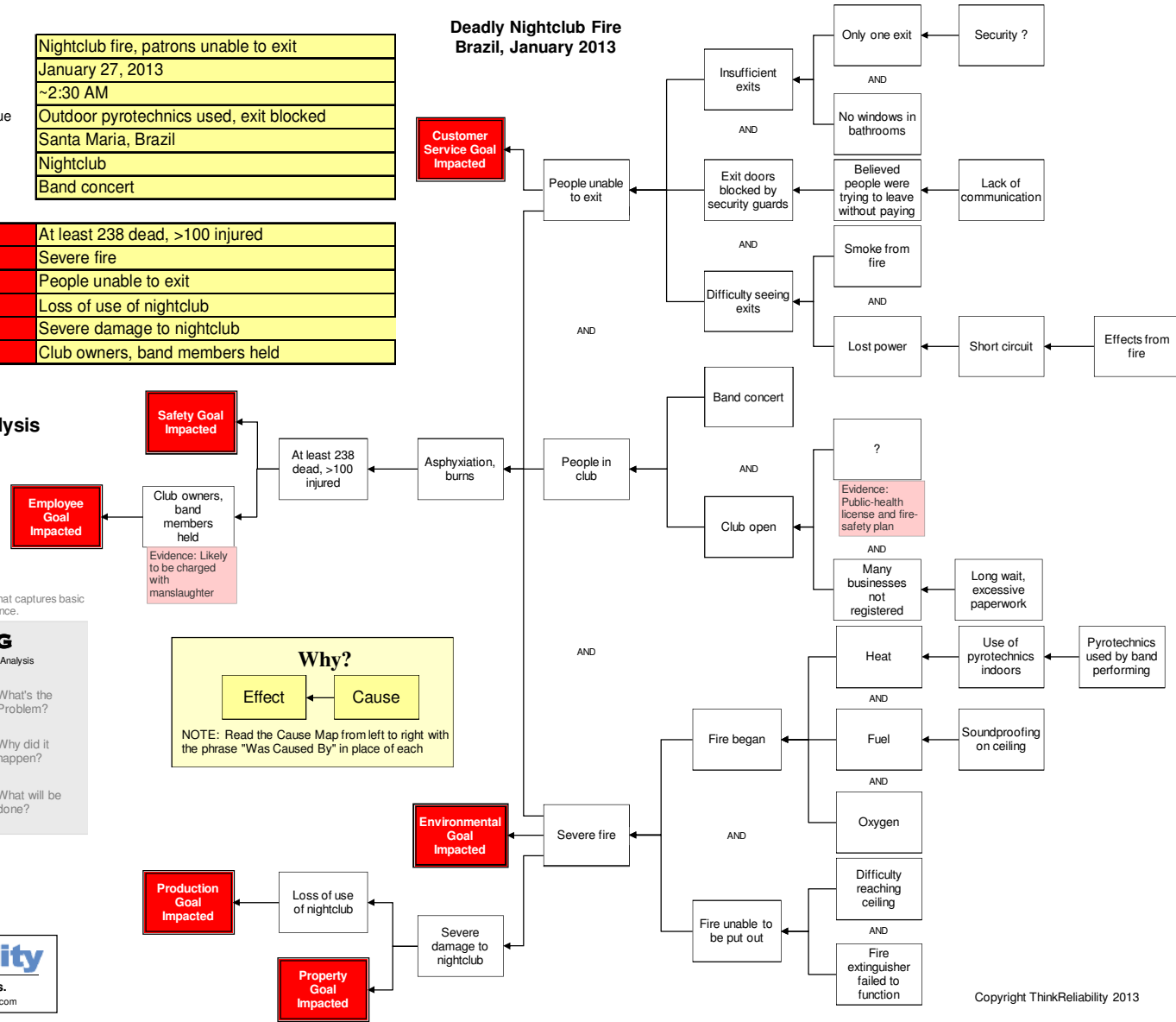
What	Problem(s)	Nightclub fire, patrons unable to exit
When	Date	January 27, 2013
	Time	~2:30 AM
Where	Different, unusual, unique	Outdoor pyrotechnics used, exit blocked
	State, city	Santa Maria, Brazil
	Facility, site	Nightclub
	Task being performed	Band concert

Impact to the Goals

Safety	At least 238 dead, >100 injured
Environmental	Severe fire
Customer Service	People unable to exit
Production-Schedule	Loss of use of nightclub
Property, Equip, Mtls	Severe damage to nightclub
Employee	Club owners, band members held

Deadly Nightclub Fire Brazil, January 2013

2 Analysis

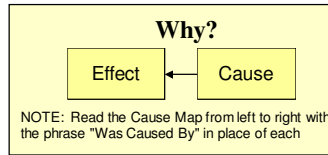


Cause Mapping is a Root Cause Analysis method that captures basic cause-and-effect relationships supported with evidence.

CAUSE MAPPING

Problem Solving • Incident Investigation • Root Cause Analysis

- Step 1 **Problem** What's the Problem?
- Step 2 **Analysis** Why did it happen?
- Step 3 **Solutions** What will be done?



ThinkReliability

Investigate Problems. Prevent Problems.
Houston, Texas 281-412-7766 ThinkReliability.com