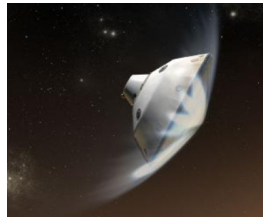


Delivering the Curiosity to Mars

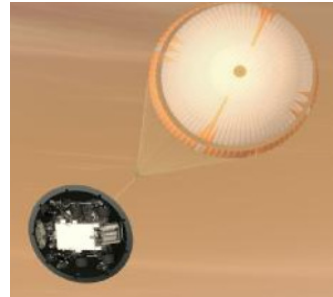
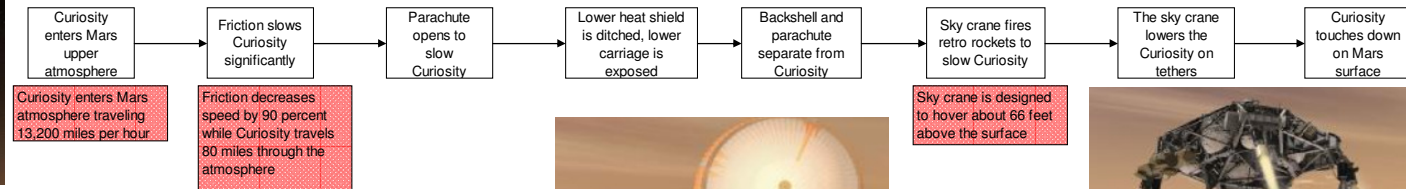
Launched November 26, 2011, Landed August 6th, 2012

""When we proposed this plan, we were almost laughed off the project. People said it couldn't possibly work."

- Adam Steltzner, NASA's chief engineer for the operation, in the new National Geographic e-book *Mars Landing 2012*.



Process Map:



Parachute deploys to slow down Curiosity.

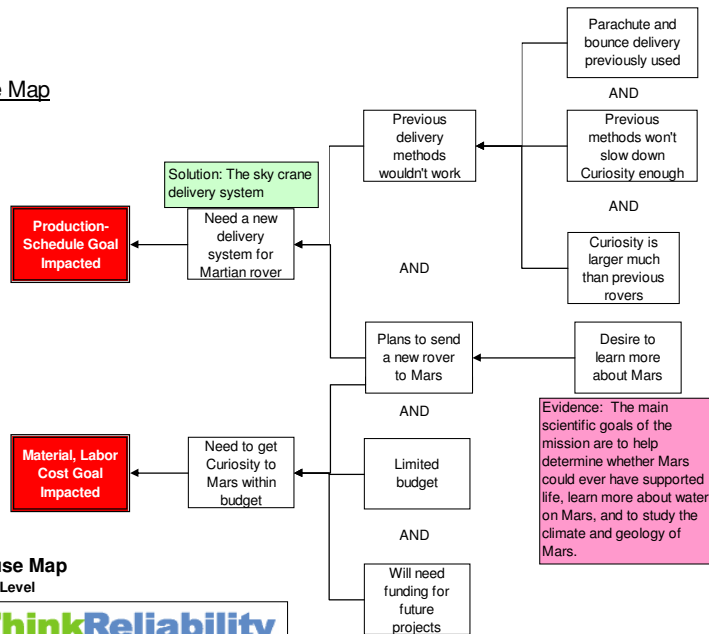


Sky crane hovers over the surface and lowers the Curiosity.



Curiosity on the surface of Mars.

Cause Map



Cause Map High Level

ThinkReliability
 Houston Office 281-489-2904
 www.ThinkReliability.com

