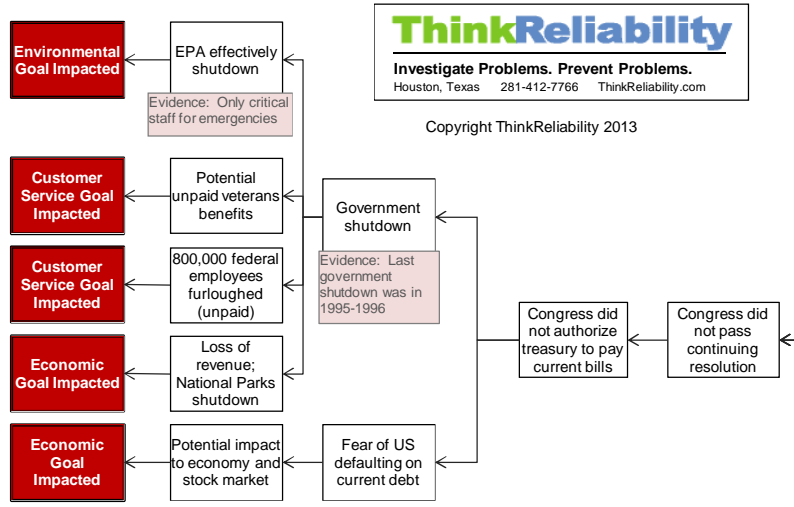


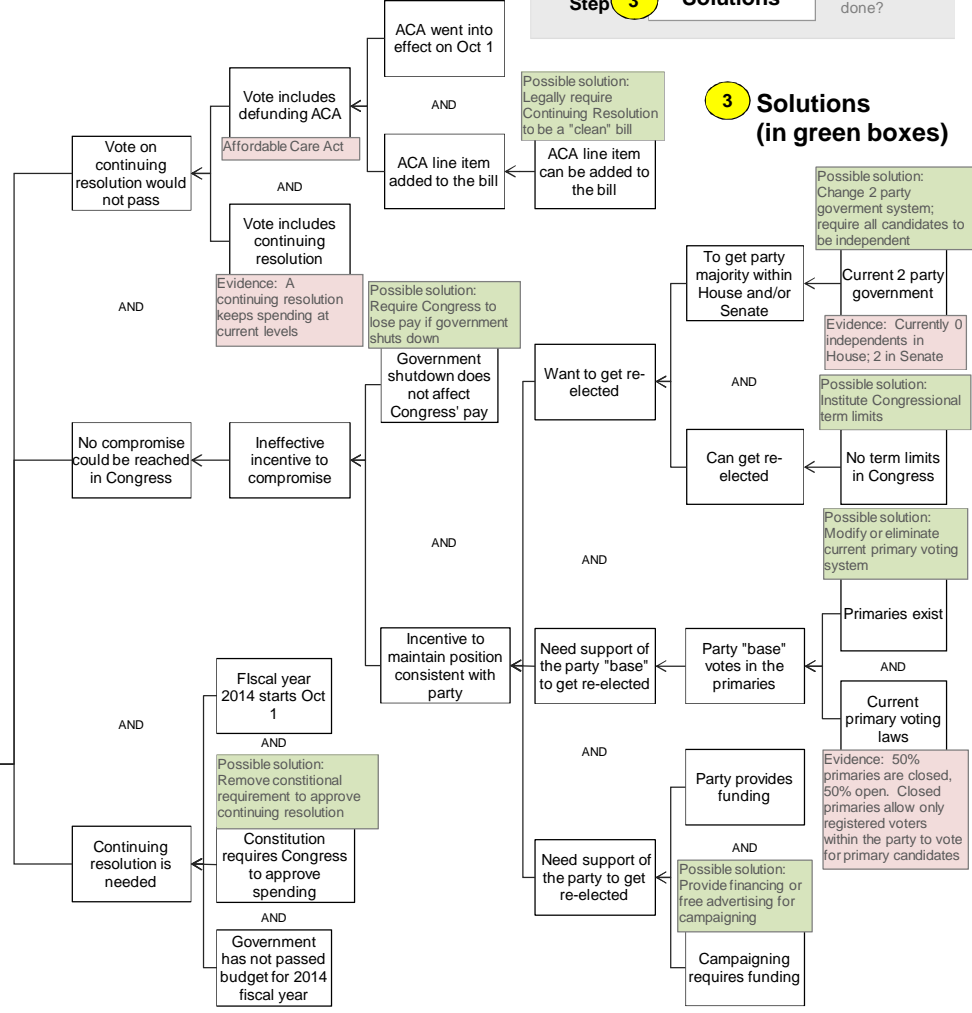
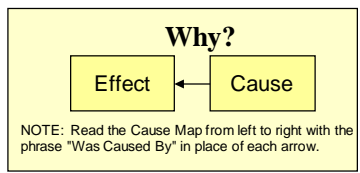
1 Problem

What	Problem(s)	Government shutdown (16 days), Congress could not reach compromise, Congress did not pass 2014 budget
When	Date	October 1-17, 2013
	Different, unusual, unique	Could not pass continuing resolution; Affordable Care Act going into effect
Where	Facility, site	Washington, DC
	Unit, area, equipment	Federal Government
	Task being performed	Trying to pass continuing resolution
Impact to the Goals		
Safety		?
Environmental		EPA effectively shut down (only critical staff for emergencies)
Customer Service		National parks and monuments shut down; 800,000 federal employees furloughed (unpaid); Potential unpaid veterans benefits
Regulatory		?
Economic		Loss in revenue; Potential impact to economy and stock market
	Frequency	Not since 1995-1996; Since 1977, there have been 17 government shutdowns
	Annualized Cost	Billions

2 Analysis



16-Day Government Shutdown Affects Economy



Cause Mapping is a Root Cause Analysis method that captures basic cause-and-effect relationships supported with evidence.

CAUSE MAPPING

Problem Solving • Incident Investigation • Root Cause Analysis

Step 1 Problem What's the Problem?

Step 2 Analysis Why did it happen?

Step 3 Solutions What will be done?

3 Solutions (in green boxes)

