

# Listeria Contaminated Cantaloupe

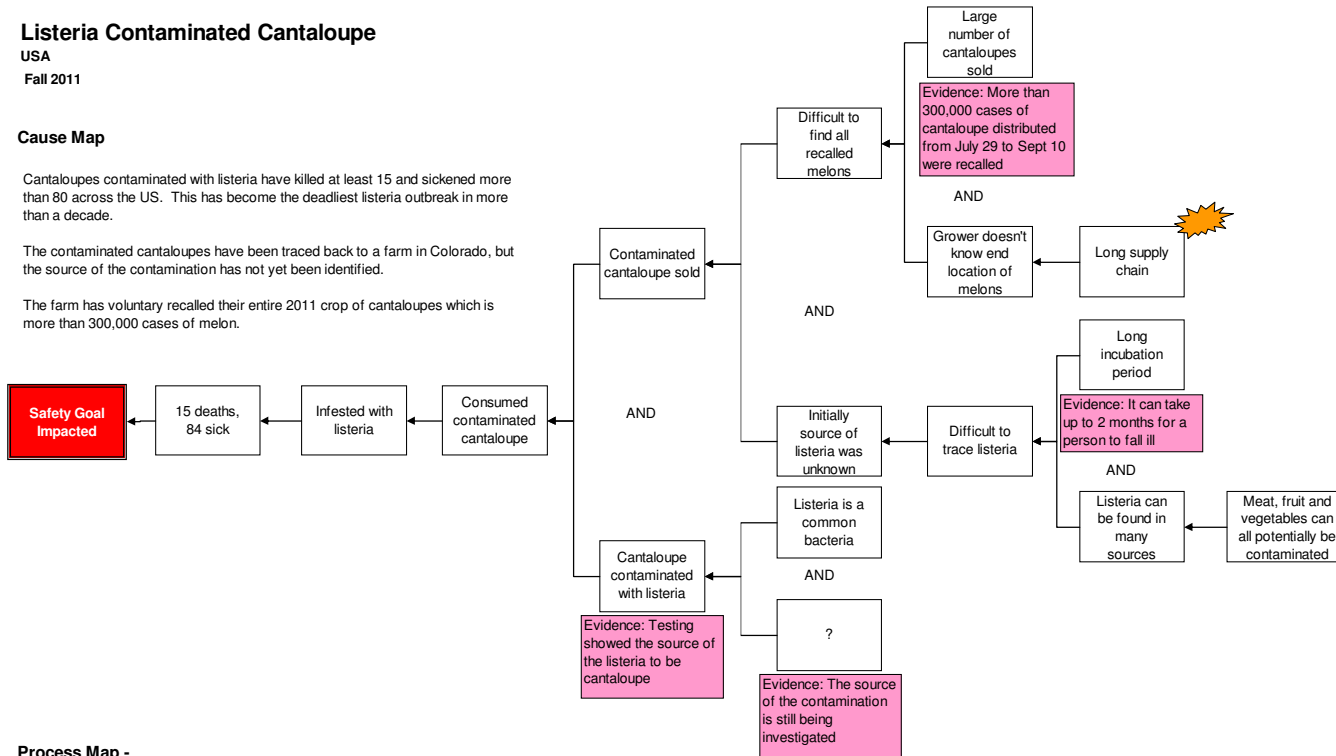
USA  
Fall 2011

## Cause Map

Cantaloupes contaminated with listeria have killed at least 15 and sickened more than 80 across the US. This has become the deadliest listeria outbreak in more than a decade.

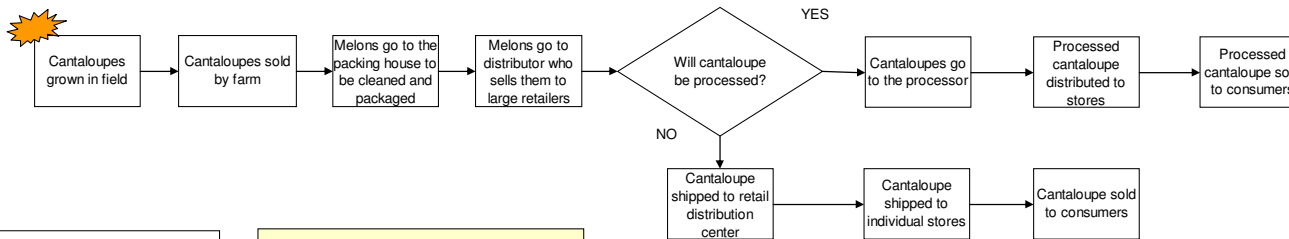
The contaminated cantaloupes have been traced back to a farm in Colorado, but the source of the contamination has not yet been identified.

The farm has voluntarily recalled their entire 2011 crop of cantaloupes which is more than 300,000 cases of melon.



## Process Map -

### Supply Chain for Cantaloupes from farm to consumers

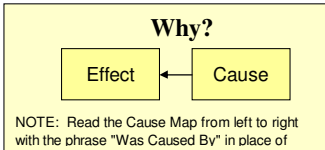


## Cause Map

High Level



Copyright ThinkReliability 2011



The many steps in the distribution chain of cantaloupes makes it difficult to trace the source of contamination and to remove all recalled melons from the food supply. The growers have no idea where their product ends up on the table.

In this example, the source of the listeria was tracked to an individual farm in Colorado, but it's possible for the melons to be contaminated at any point in the distribution process.