

### Step 1. Outline

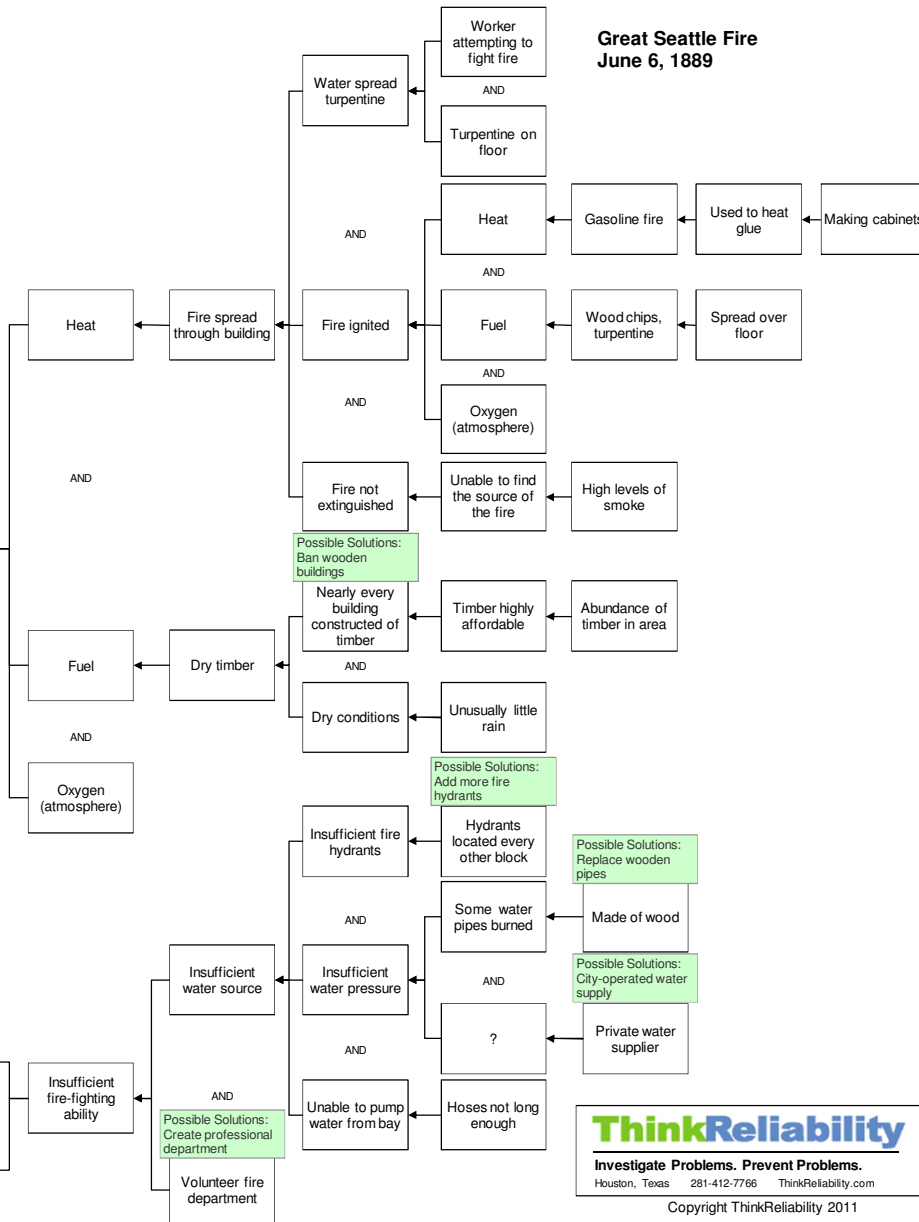
<b>What</b>	Problem(s)	Fire
<b>When</b>	Date	June 6, 1889
	Time	~2:30 p.m.
<b>Where</b>	Different, unusual, unique	Floor covered with turpentine
	State, city	Seattle, WA
	Facility, site	Cabinet-making shop
	Unit, area, equipment	Gasoline fire
	Task being performed	Heating glue

### Impact to the Goals

<b>Safety</b>	1 confirmed death during fire Fatalities during cleanup process
<b>Environmental</b>	Severe damage to surrounding area
<b>Cust. Service</b>	Insufficient fire-fighting ability
<b>Production-Schedule</b>	Loss of water, electrical services
<b>Property, Equip, Mtls</b>	Destruction of >25 city blocks, including business district, 4 wharves, and railroad terminals
<b>Labor, Time</b>	Rebuilding of city

This incident \$20 M

### Great Seattle Fire June 6, 1889



### Step 2. Cause Map Detail Level

